

SVC
SERIES

General Area Light Distribution Cold Storage Vaportight

Product Description

A highly durable and efficient gasketed vaportight fixture designed to maximize light distribution and withstand the harshest of conditions.

Applications include: parking garages, tunnels, car washes, subways and washbays.

Light Distribution - The impact resistant, crepe finish lens allows for even light distribution.

Heat Retention – The fixture housing and reflector are customized to manipulate heat retention within the fixture, and provide interior fixture conditions conducive to maximum lumen output for each given application temperature.

Mounting Methods

SVC fixtures are available with durable stainless steel mounting hardware. This mounting option allows the fixture to be hung without holes being drilled through the housing, thus maintaining the fixture's IP ratings and integrity.

Product Construction

The SVC's housing is constructed of a fiberglass upper body and an acrylic, crepe pattern diffuser securely positioned in a permanent poured in place sealed gasket. The diffuser and upper components are locked into place by retaining latches, assuring a secure, tight seal.

Optical Reflector system (optional) is precision brake formed of the selected aluminum material. The one piece reflector is removable without the use of tools.

Lampholders are made of a Polycarbonate material; these locking-style lampholders are utilized to ensure positive lamp retention. Additionally, the material contributes to a longer life product in high temperature applications.

Lens is Impact Resistant DR Acrylic. Optional lenses are available, see ordering information.

Lamps – Optimum Lighting recommends the use of Amalgam Tip or Arctic lamps, which tolerate a much broader range of ambient temperature extremes with minimal impact on lumen output, in reduced temperature environments.

Ballasts are electronic programmed-start (T5HO) or instant-start (T8) as a standard. Optional ballasts are available, consult factory for available systems and system specifications. Available voltages: 120v, 277v, 347v, voltage sensing 120-277v and 347-480v.

Listings – All fixtures are UL and CUL listed, IP65 and/or IP67.



Made in the USA

VAPOR/VANDAL
FIXTURES



The Brightest Energy Solution

Phone: (800) 541-9082 Fax: (888) 214-7667 Web: www.optimumlighting.com

SVC – Fixture Ordering Information

Fixture Series	Temperature*1	Lens	# of Lamps	Lamp Type	Voltage	# Ballasts	Ballast Type	Reflector	Hanging	Options	Lamp Color	Lamp Options*4
SVC	SPECIFY	BLANK	1	17	12	1	HI	E	BLANK	C ()	BLANK	HP
SVCT*1		DRH	2	24	27	2	LI	W	V	6T1	830	A*5
		PC	3	32	34	3	SI	B	QC	6T2	835	TG*6
			4*2	54	UV		SI+		QC ()	E ()	841	SS*6
			5*2		HV				SMB	F	850	ES ()
							PSL			OS ()		
							PSH			20G		
							PD			SDT		
							SDH			TPL		
										SSI		
										IL67		
										PC		
										PLA*3		

Please Specify When Ordering:

Fixture Series	Temperature	Lens	# of Lamps	Lamp Type	Voltage	# Ballasts	Ballast Type	Reflector	Hanging	Options	Lamp Color	Lamp Options
SVC												

*1 SVCT is an 8ft Tandem fixture, # of lamps are for the profile of the fixture.

*2 Due to heat buildup, 4 & 5 lamp options only available in reduced temperature environments.

*3 PLA option only available in SVC & SVCT fixtures with 3/ 4 lamp T8/T5HO profile or 5 lamp T5HO profile.

*4 Consult Factory for Manufacturer Specific Ordering Codes/Availability.

*5 Optimum Lighting recommends the use of amalgam tip lamps in extreme temperature applications.

*6 Use in lensed fixtures is limited. Contact factory for specific application details.

Lens Selections

- BLANK** DR Acrylic Impact Resistant
- DRH** DR Acrylic High Impact
- PC** Polycarbonate

Lamp Type Selections

- 17** F17T8 System
- 24** F24T5HO System
- 32** F32T8 System
- 54** F54T5HO System

Voltage Selections

- 12** 120V
- 27** 277V
- 34** 347V
- UV** 120-277V
- HV** 347-480V

Ballast Selections

- HI** High Ballast Factor (HBF) Electronic*
- LI** Low Ballast Factor (LBF) Electronic*
- SI** Standard Ballast Factor (NBF) Electronic*
- SI+** 1.0BF Electronic*
- PS** Programmed Start (NBF)
- PSL** Programmed Start LBF*
- PSH** Programmed Start HBF*
- PD** Programmed Start Dimming
- SDH** Step Dimming HBF (100% to 60% Dimming)*

* T8 Only

Reflector Selections

- E** Enhanced Aluminum
- W** Highly Reflective White Aluminum
- B** 95% Reflective Extreme White Aluminum

Hanging Selections

- SM** Stainless Spring Mount Bracket

Options Selections

- C ()** Single Circuit Cord (Specify Length)
- 6T1** 6' Cord with L5-15 Locking End
- 6T2** 6' Cord with L7-15 Locking End
- E ()** Emergency Pack (# Lumens)
- F** Inline Fuse
- OS ()** Occupancy Sensor (Specify Lamps on Low/Lamps on High)
- 20G** 20 gauge NYC Standards
- SDT** Step Down Transformer (480 to 277V)
- TPL** Tamperproof Latches
- SSL** Stainless Steel Latches
- IP67** IP67 Rated Enclosure
- PC** Photocell
- PLA** Peaked Lamp Array

Lamp Color Selections

- BLANK** Lamps Not Included
- 830** 80+ CRI, 3000K
- 835** 80+ CRI, 3500K
- 841** 80+ CRI, 4100K
- 850** 80+ CRI, 5000K

Lamp Options Selections

- HP** High Performance, Long Life Lamps*
- A** Amalgam Tip Lamps**
- TG** Tubeguarded Lamps
- SS** Shattershielded Lamps
- ES ()** Energy Saver (Specify Wattage)

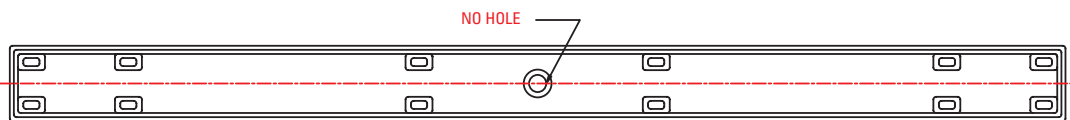
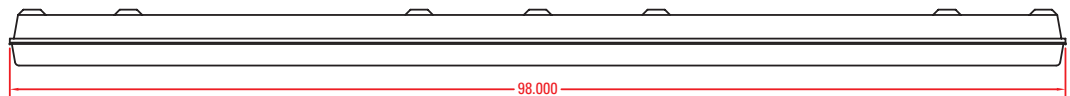
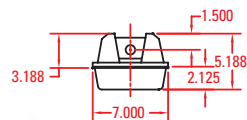
* T8 Only
** T5HO Only

Common Fixture Selections

Catalog Number	System	# of Lamps	Wattage (120/277V)*	Initial System Lumens*	Mean System Lumens*
SVC (0F) 354 UV 1PS W	T5HO(Amalgam)	3	188w/185w	14,847	14,105
SVC (-10F) DRE 454 UV 1PS E	T5HO(Amalgam)	4	232w/226w	19,600	18,620
SVCT (0F) 254 UV 1PS E	T5HO(Amalgam)	4	232w/226w	19,600	18,620
SVC (-15F) 554 UV 2PS E	T5HO(Amalgam)	5	304w/300w	24,647	23,415

*Wattages may vary depending on the ballast manufacturer and lamp type used.

Initial and mean system lumens are the initial/mean lumen output of the lamp/ballast system as rated by lamp and ballast manufacturer and may vary from manufacturer to manufacturer. Specifications and dimensions subject to change without notice. Contact Optimum Lighting for current availability and ordering information.



Fixture Type: _____

Catalog #: _____ Quantity: _____

Project: _____